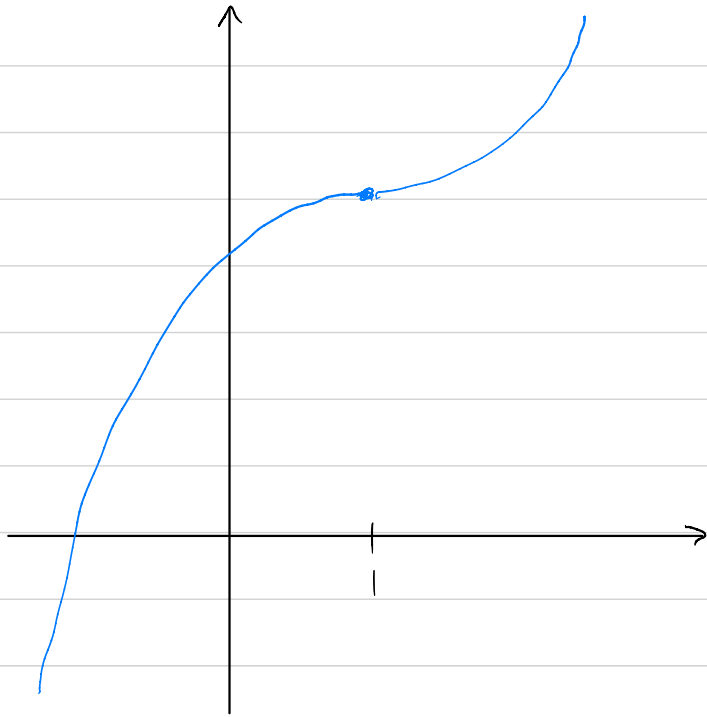
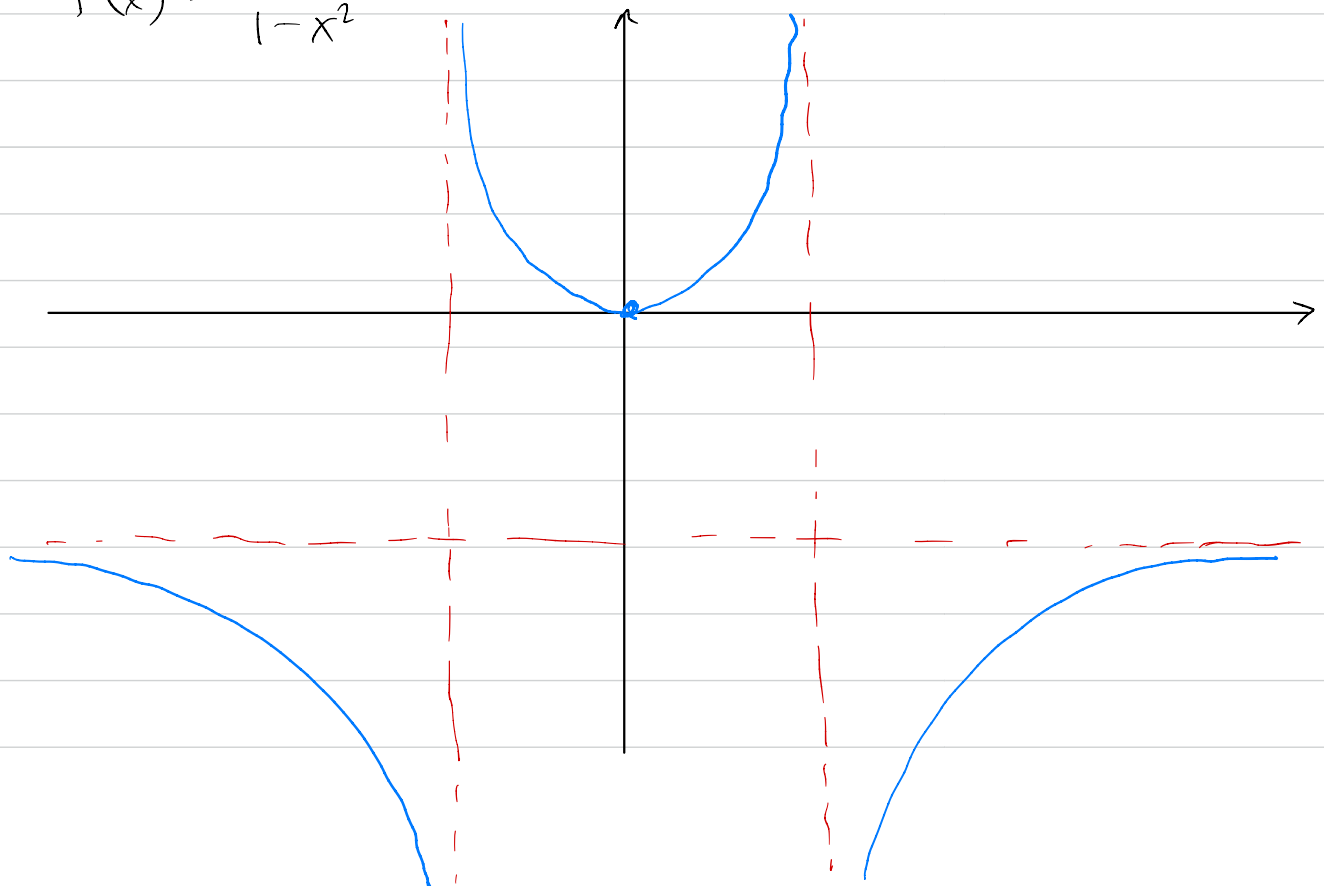


Practice Problems for Exam 3: Graphs

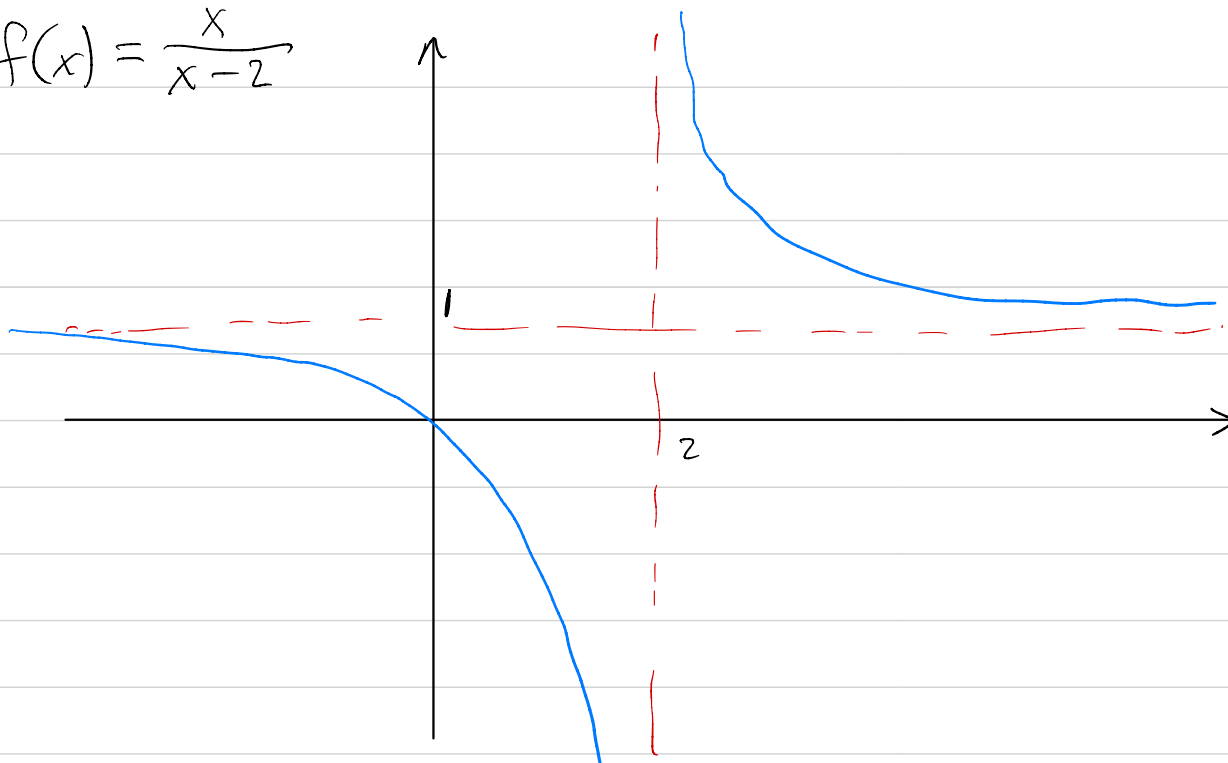
#18: $f(x) = x^3 - 3x^2 + 3x + 10$



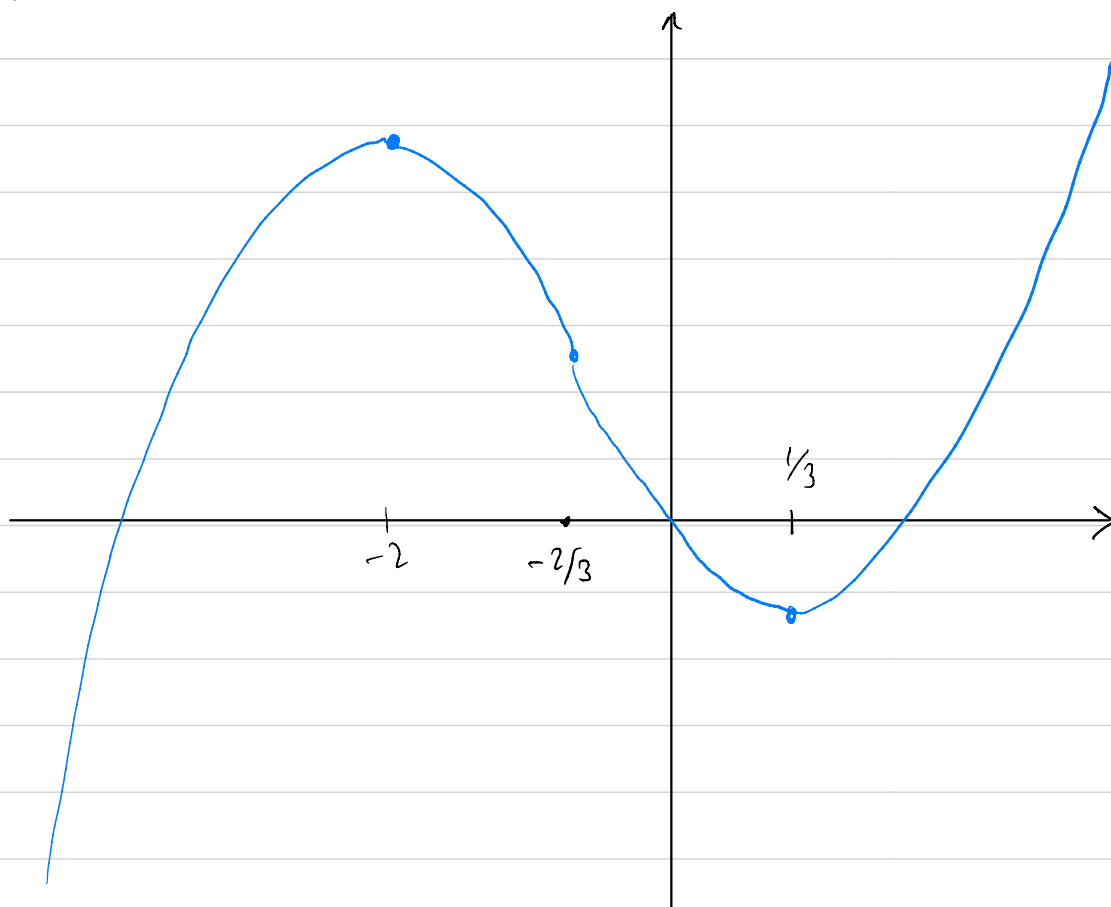
#19: $f(x) = \frac{3x^2}{1-x^2}$



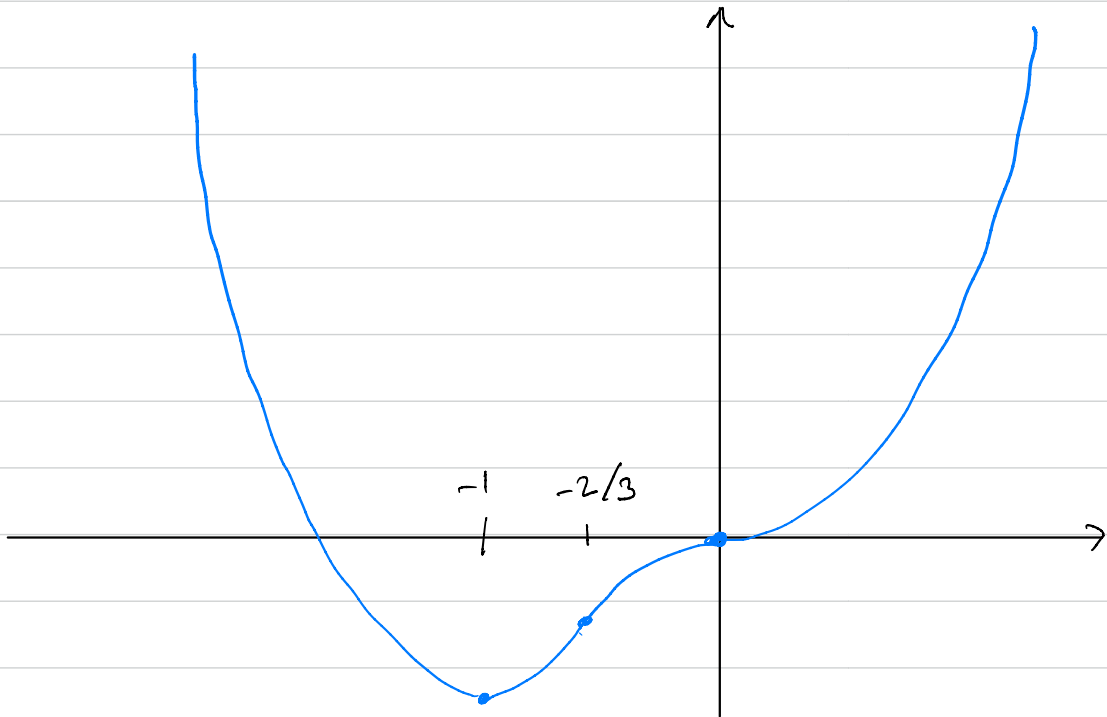
#20: $f(x) = \frac{x}{x-2}$



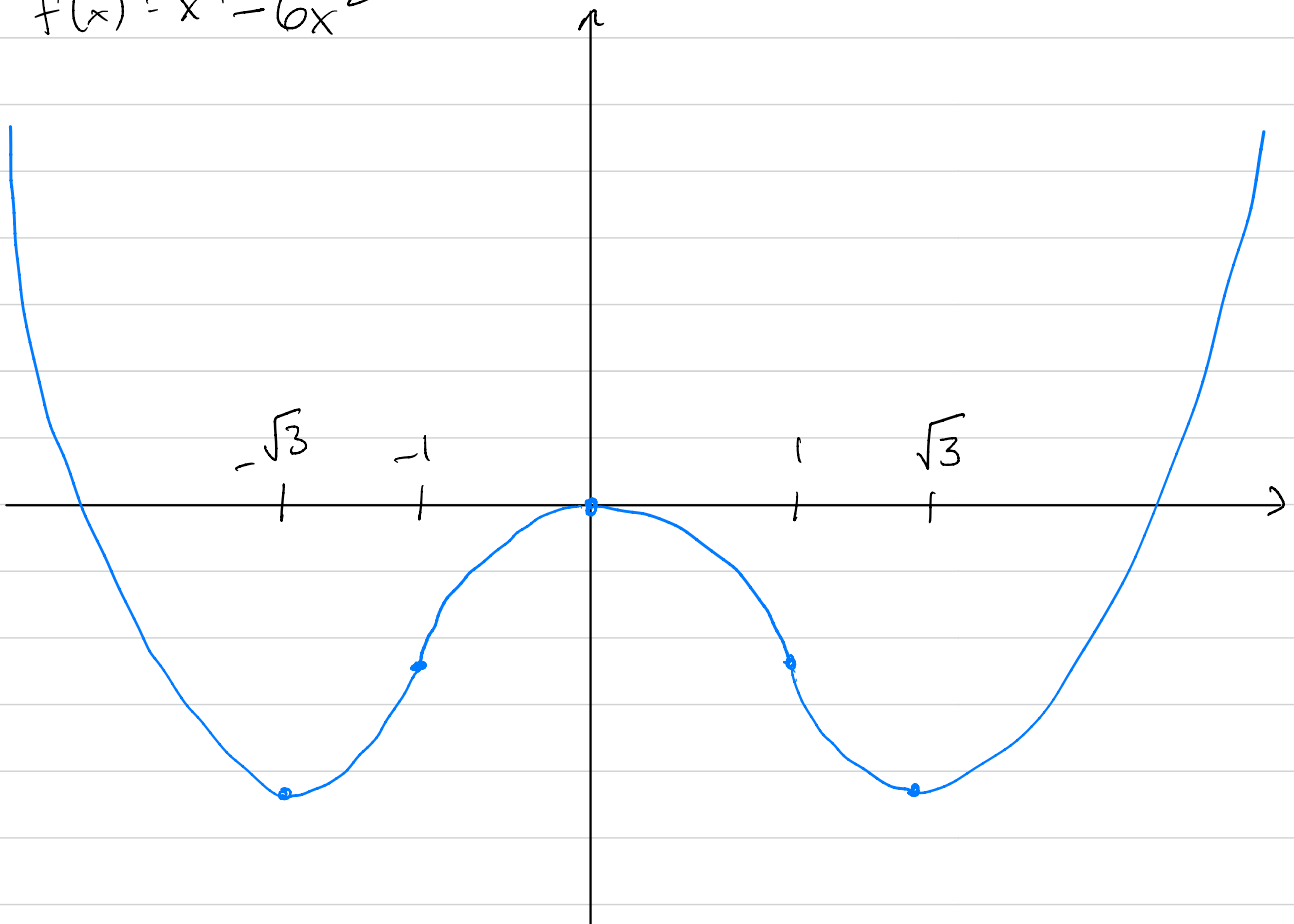
#21: $f(x) = 2x^3 + 5x^2 - 4x$



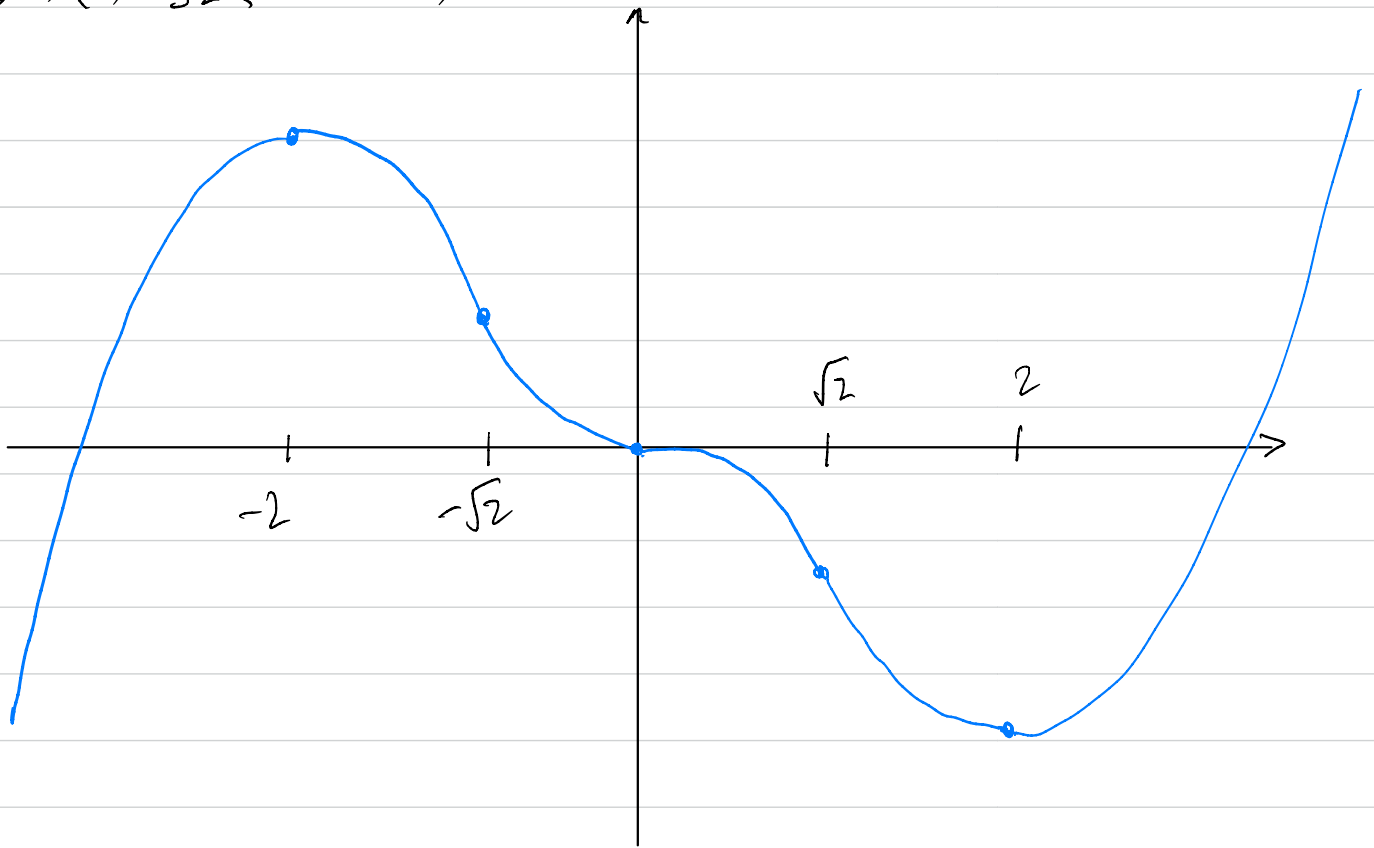
#22 : $f(x) = 3x^4 + 4x^3$



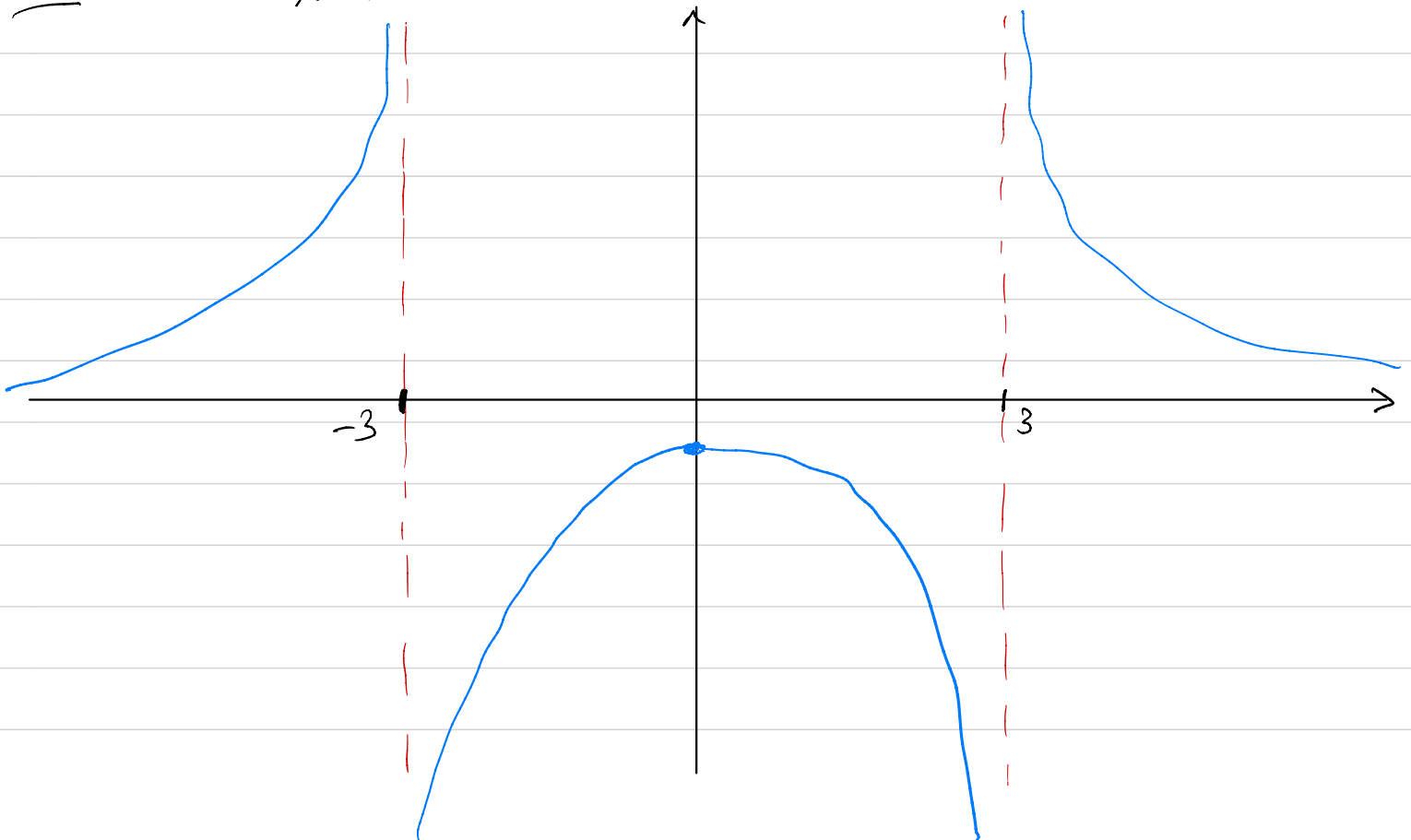
#23 $f(x) = x^4 - 6x^2$



#24 $f(x) = \frac{1}{32}(3x^5 - 20x^3)$

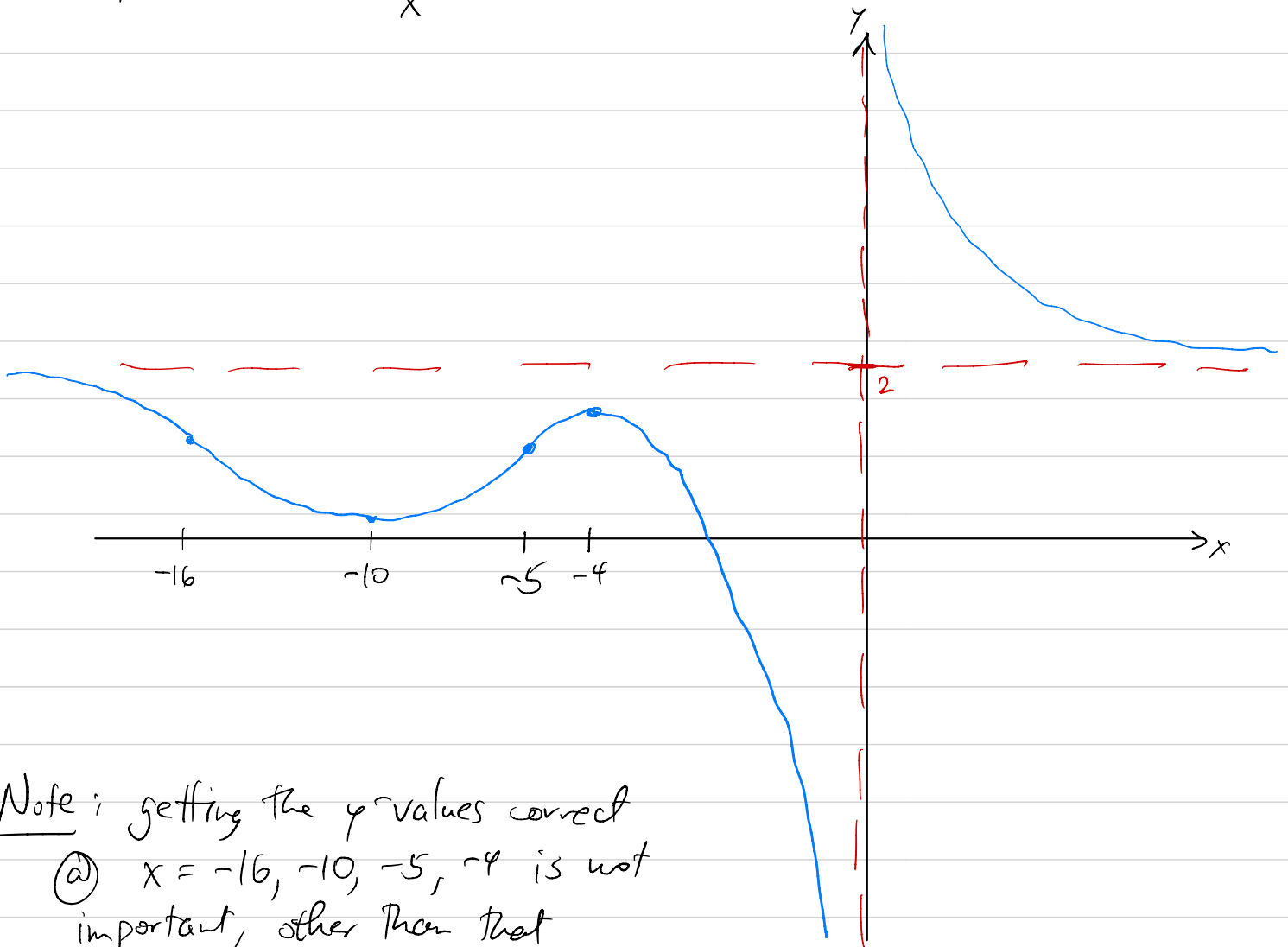


#25 $f(x) = \frac{1}{x^2 - 9}$



26:

$$f(x) = \frac{2x^3 + 45x^2 + 315x + 600}{x^3}$$



Note: getting the y -values correct

(a) $x = -16, -10, -5, -4$ is not important, other than that $f(-16), f(-10) < 2$