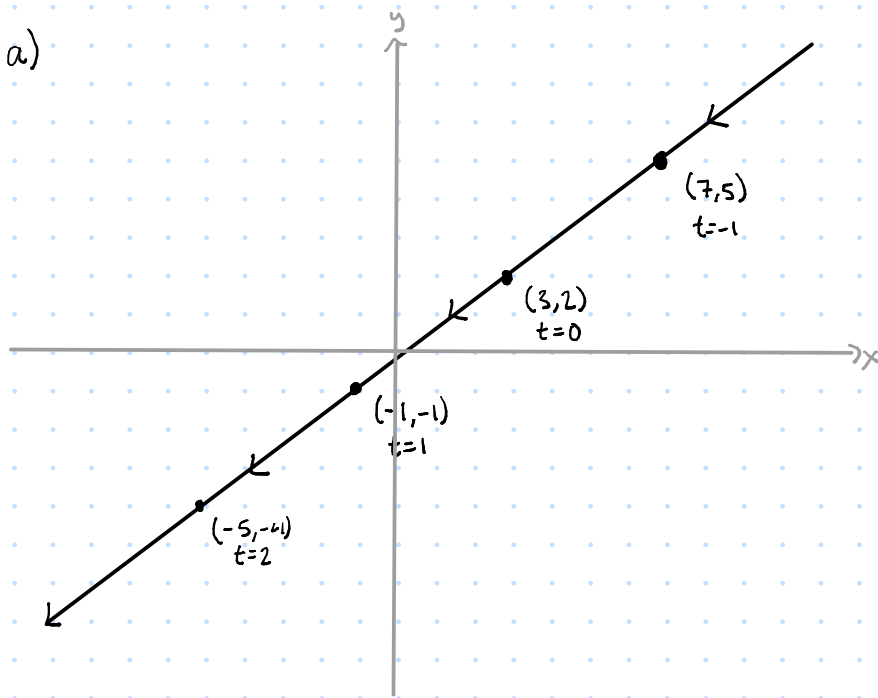


# PSet 18 answer key

1. a)



b)

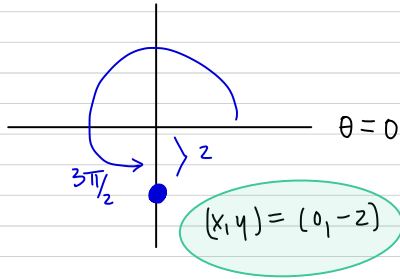
$$y = \frac{3}{4}x - \frac{1}{4}$$

2.  $y = x + 2$

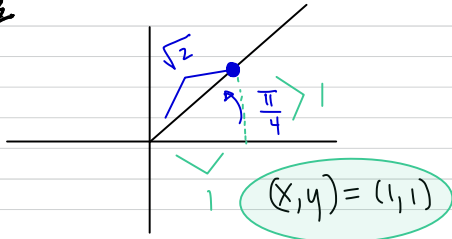
3.  $e^3 - e^{-3}$

HW #18 Answer Key continued

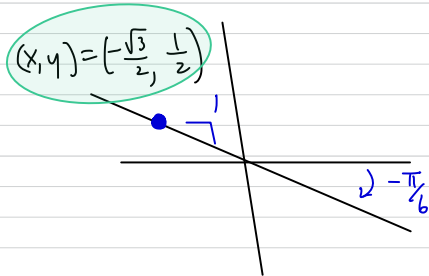
4. ~~8~~



5. ~~4~~

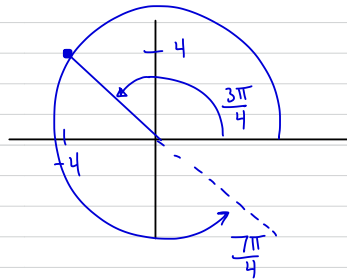


6. ~~8~~



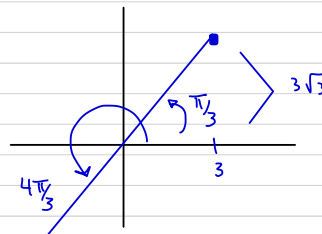
7. ~~4~~  $r > 0: (r, \theta) = (4\sqrt{2}, \frac{3\pi}{4})$

$r < 0: (r, \theta) = (-4\sqrt{2}, \frac{7\pi}{4})$



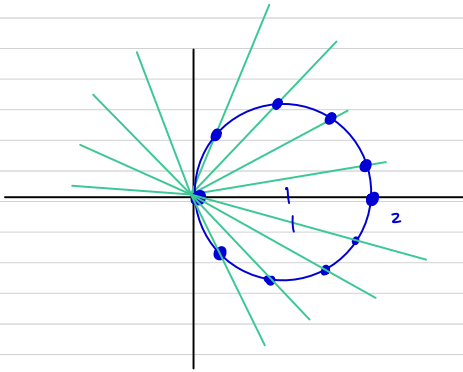
8. ~~4~~  $r > 0: (r, \theta) = (6, \frac{\pi}{3})$

$r < 0: (r, \theta) = (-6, \frac{4\pi}{3})$

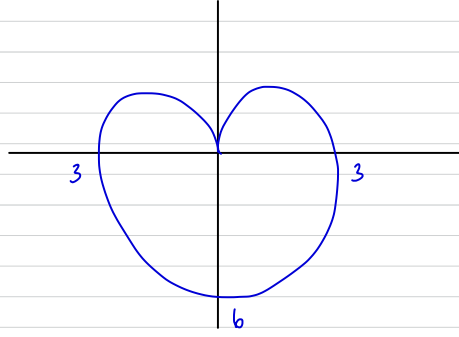


For 6-11, Make sure to show BOTH Cartesian + Polar Plots

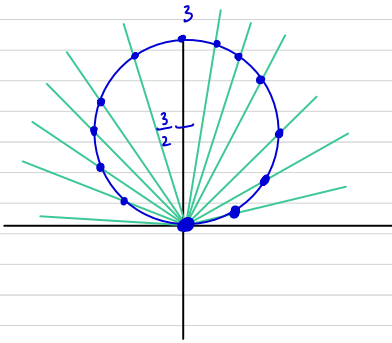
9. ~~6~~ Polar Curve



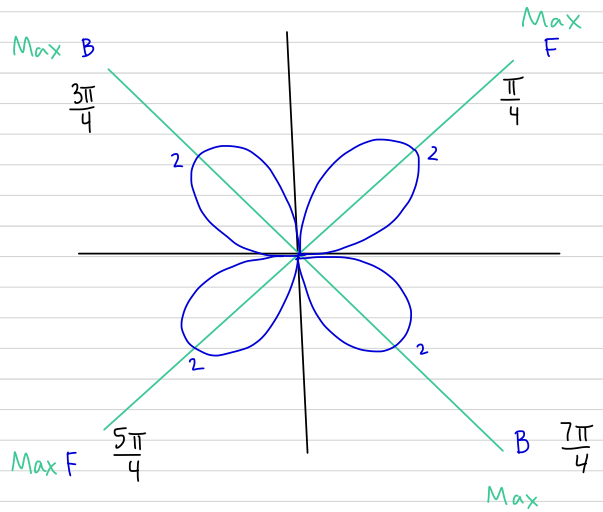
13. ~~13~~ Polar Curve 3-6-3 Cardioid



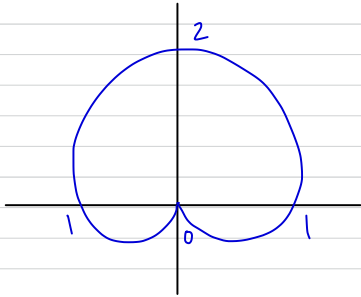
10. ~~10~~ Polar Curve



14. ~~14~~ Polar Curve 4-petal leaved rose



11. ~~11~~ Polar Curve 1-2-1 Cardioid



12. ~~12~~ Polar Curve: 2-4-2 Cardioid

